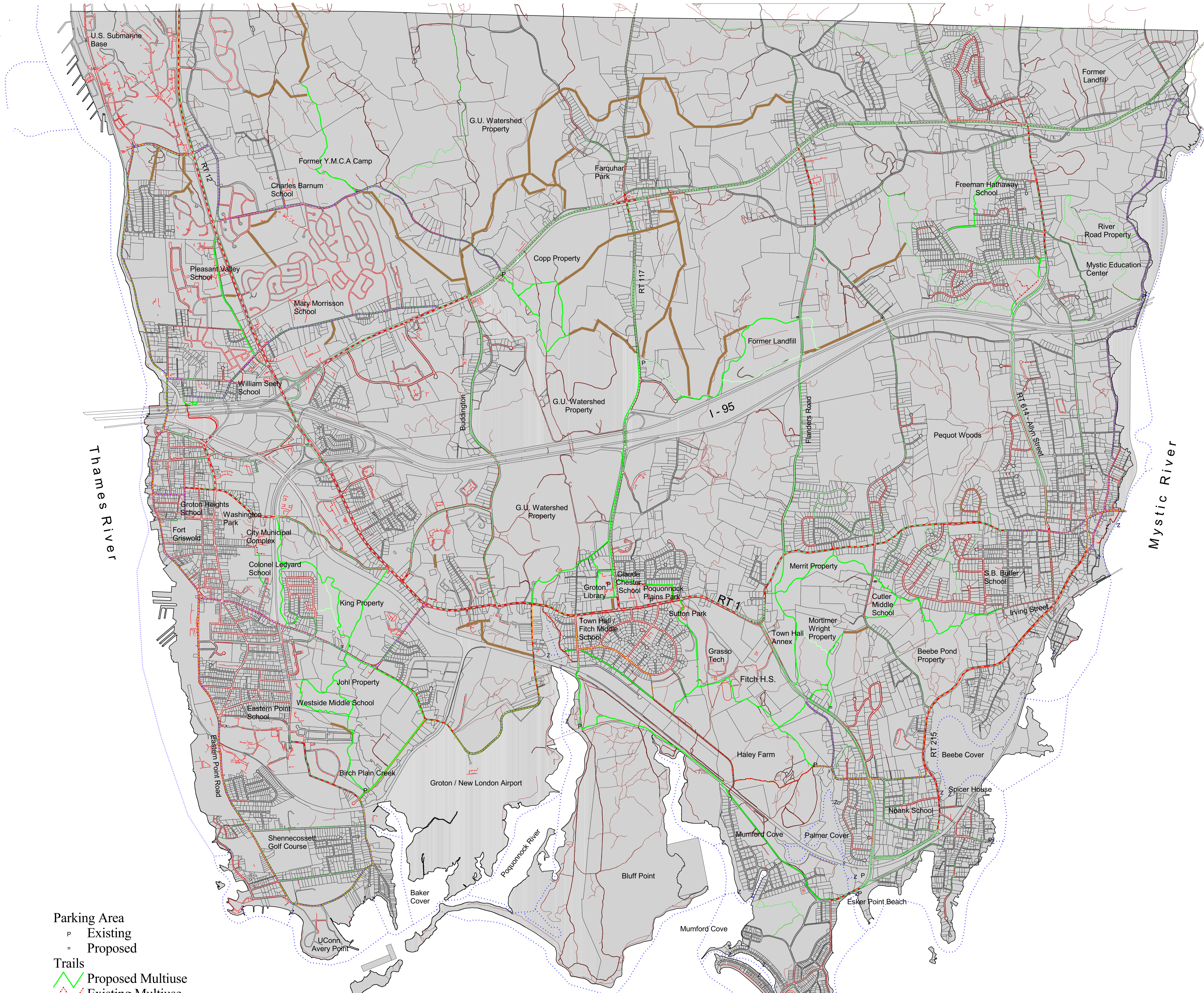


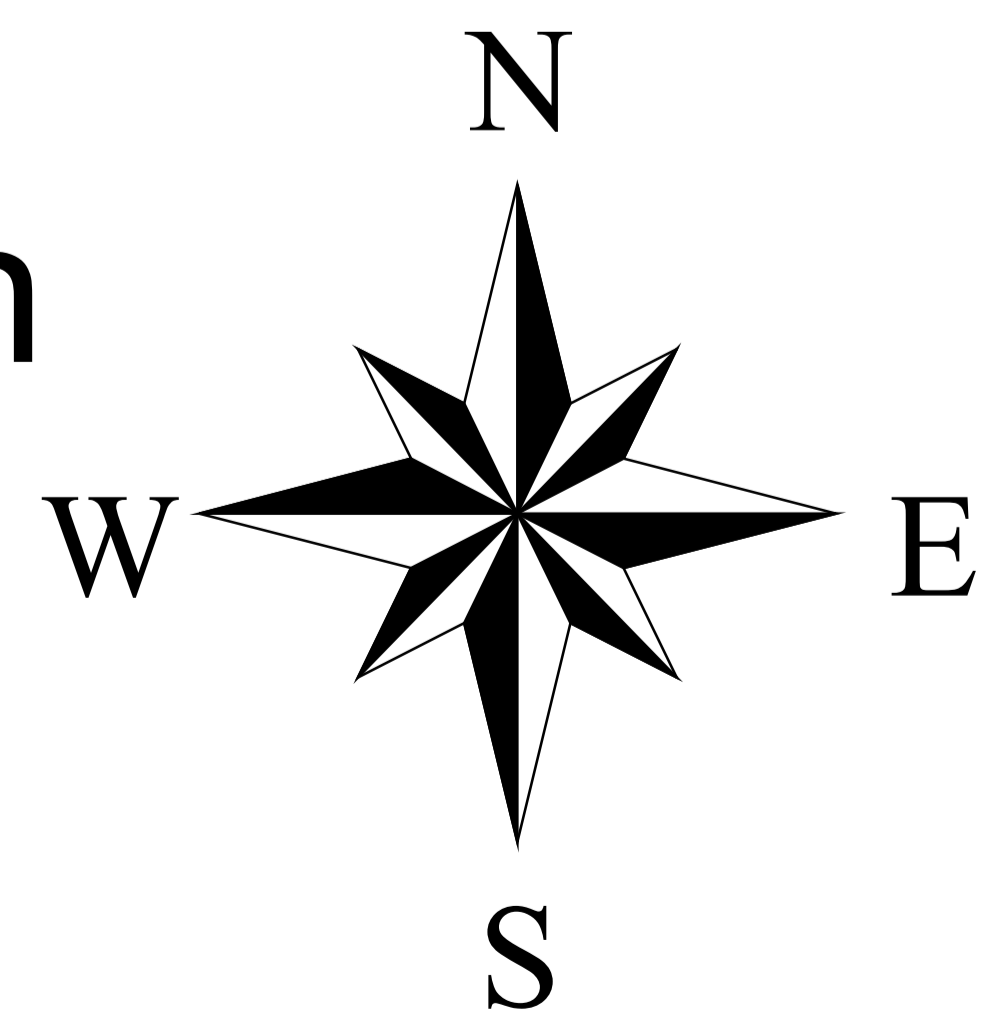
Groton Bicycle, Pedestrian, & Trails Preliminary Master Plan



- Parking Area**
- Ⓟ Existing
- Proposed
- Trails**
- ▬ Proposed Multiuse
- ▬ Existing Multiuse
- ▬ Alternate Multiuse
- ▬ Hiking
- ▬ Desirable Multiuse
- Bicycle Improvements**
- ▬ Fair Accomodation *
- ▬ High Accomodation **
- ▬ Proposed Signed Route ***
- ▬ Stripe / Widen ****
- ▬ Existing Trails
- Water Trails**
- ▬ Experienced
- ▬ General Use
- z Coastal Access Point
- ▬ State Bke Route
- ▬ Existing Sidewalks
- ▬ Proposed Sidewalk
- ▬ Public Lands and Open Space

Bicycle, Pedestrian, & Trails Master Plan

- * Some Improvements Needed
Striping, Signage, Road Repairs
- ** Very Minor Improvements Warranted
Signage & Road Repairs
- *** Road Cannot Accomodate Widening
Add Signage
- **** Create Bike Lanes or Paved Shoulders
With Signage



Brian Kent Associates

July 15, 2004

0.5 0 0.5 1 1.5 2 2.5 3 3.5 4 4.5 5 5.5 6 Miles

